

# Street Smart

## Cyclomedia's interactive software

Street Smart is an interactive, web-based application that gives you access to Cyclomedia's image and laser scan data. The software also offers an interface for aerial photos and data layers as well as the LiDAR point cloud. Street Smart has visualization, measurement and analysis functions that can be used intuitively. The Street Smart software and Cyclorama image data as well as laser scan data are provided directly by Cyclomedia servers. All information can therefore be quickly and easily integrated into your daily work processes without changes in your own IT infrastructure.

cyclomedia



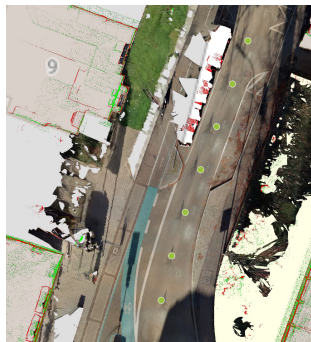
# Street Smart

With **Street Smart** you have access to all data generated by Cyclomedia: 3D Cycloramas, the LiDAR point cloud, **Street Ortho** and the inventory results of lights, traffic signs or road markings. Visualize the outside world from your desk in great detail! **Street Smart** also offers a variety of functions that support you in analyzing the public environment and planning, for example, construction work. **Street Smart** gives you access to the digital twin of your city or supply area.

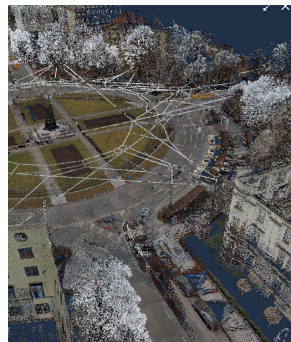
Base Map



Street Ortho



LiDAR point cloud



3D-Cyclorama



Simulation



## Visualize

Get an overview of the situation on site, comfortably from your desk with the high-resolution and full-coverage 360° panoramic images from Cyclomedia.

## Measure

In **Street Smart**, measure points, lines and areas as well as orthogonal angles and vertical heights right down to the centimeter directly in the image or in the basic map.

## Analyze

Draw information from the images about the location or condition of relevant objects in the traffic area, such as street lights, traffic signs, trees or road markings.

## Overlay data

With the overlay function, you can display georeferenced data on the map or directly in the Cycloramas. Use **Street Smart** for documentation or analysis tasks.

**Real Data. True Understanding. Big Impact.**

## Specifications

- HTML5 based
- Usable on mobile devices
- Can be integrated into other applications
- Integration of other data layers possible: road, cadastral information, and much more

## Functionalities

- Access to images, LiDAR point cloud, **Street Ortho** and inventories
- Measuring function in the image, in the LiDAR point cloud, in **Street Ortho** and the base map
- Flood simulation

**cyclomedia**

[www.cyclomedia.com](http://www.cyclomedia.com) | [info@cyclomedia.com](mailto:info@cyclomedia.com)