

3D-Cycloramas

The 360° panoramic images from Cyclomedia

3D Cycloramas are the high-quality 360° panorama images from Cyclomedia combined with a LiDAR point cloud: During the recording drivings, the specially equipped recording vehicles not only generate panoramic images of the surroundings, but also LiDAR data with the help of a laser scanner. By using this advanced LiDAR technology, Cyclomedia enables you to switch from a two-dimensional HD Cyclorama to a three-dimensional all-round view.

cyclomedia

3D-Cycloramas

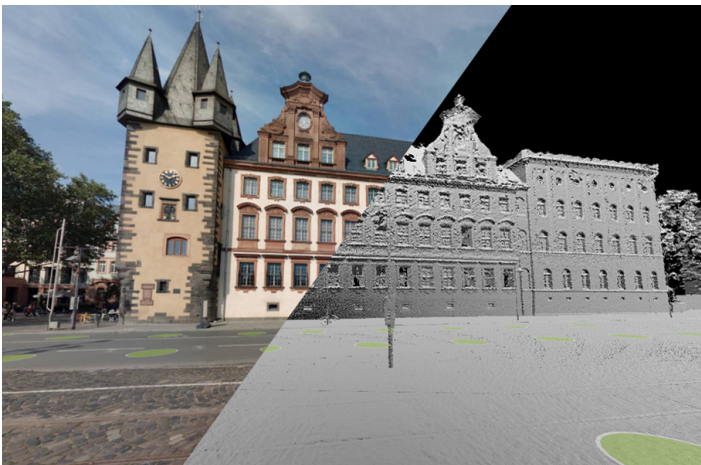
3D-Cycloramas are the high-quality 360° panoramic images from Cyclomedia combined with a LiDAR point cloud: During the recording, the specially equipped recording vehicles not only generate panoramic images of the surroundings, but also LiDAR data with the help of a laser scanner. By using this advanced LiDAR technology, Cyclomedia enables you to switch from a two-dimensional HD Cyclorama to a three-dimensional all-round view.

3D layer in the background

The 3D-Cyclorama consists of a 360° panoramic image and an additional layer that is usually not visible.

This layer, generated from the LiDAR data, is only used in the background.

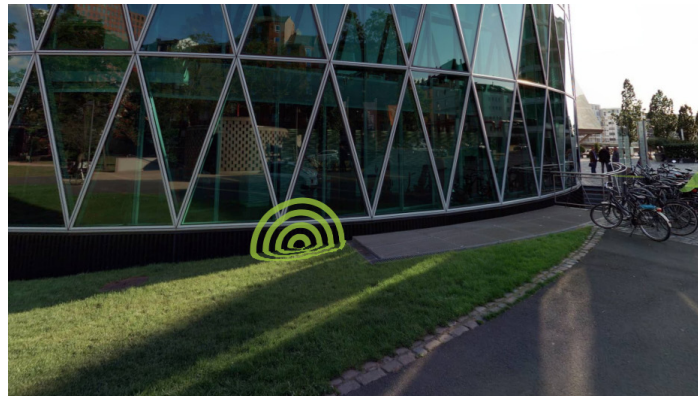
The following figure shows the additional depth information in combination with a Cyclorama.



The depth information available in the 3D-Cyclorama allows you to measure with the Measure Smart function without having to make a forward cut. This means that a 3D measurement can be carried out with just one click.

Surface Cursor

The surface cursor makes it possible to display the surface properties of objects or surfaced in the Cycloramas. It simplifies taking accurate measurements!



The digital twin

Cycloramas provide you with the image of your city or your supply area, as real as outside, directly at your workplace. This reliable image data makes planning, management and documentation tasks easier, faster and easier to understand.

Real Data. True Understanding. Big Impact.

Specifications

Position accuracy

- Georeferencing (average 10cm)
- Control point for position optimization

Image quality

- Natural, bright and clear colors
- 100 megapixel image resolution

Geometric accuracy

- Geometrically accurate in every pixel
- Completely spherical 360° all-round view
- Parallax free

Metadata

- Resolution and color depth
- Image ID

cyclomedia

www.cyclomedia.com | info@cyclomedia.com