



COMPANY PROFILE

September 2020



Global Head Office, Envac AB

Fleminggatan 7, 3 tr - SE-112 26 Stockholm, Sweden

Tel +46 8 785 00 10 email envacgroup@envac.se

About Envac Group

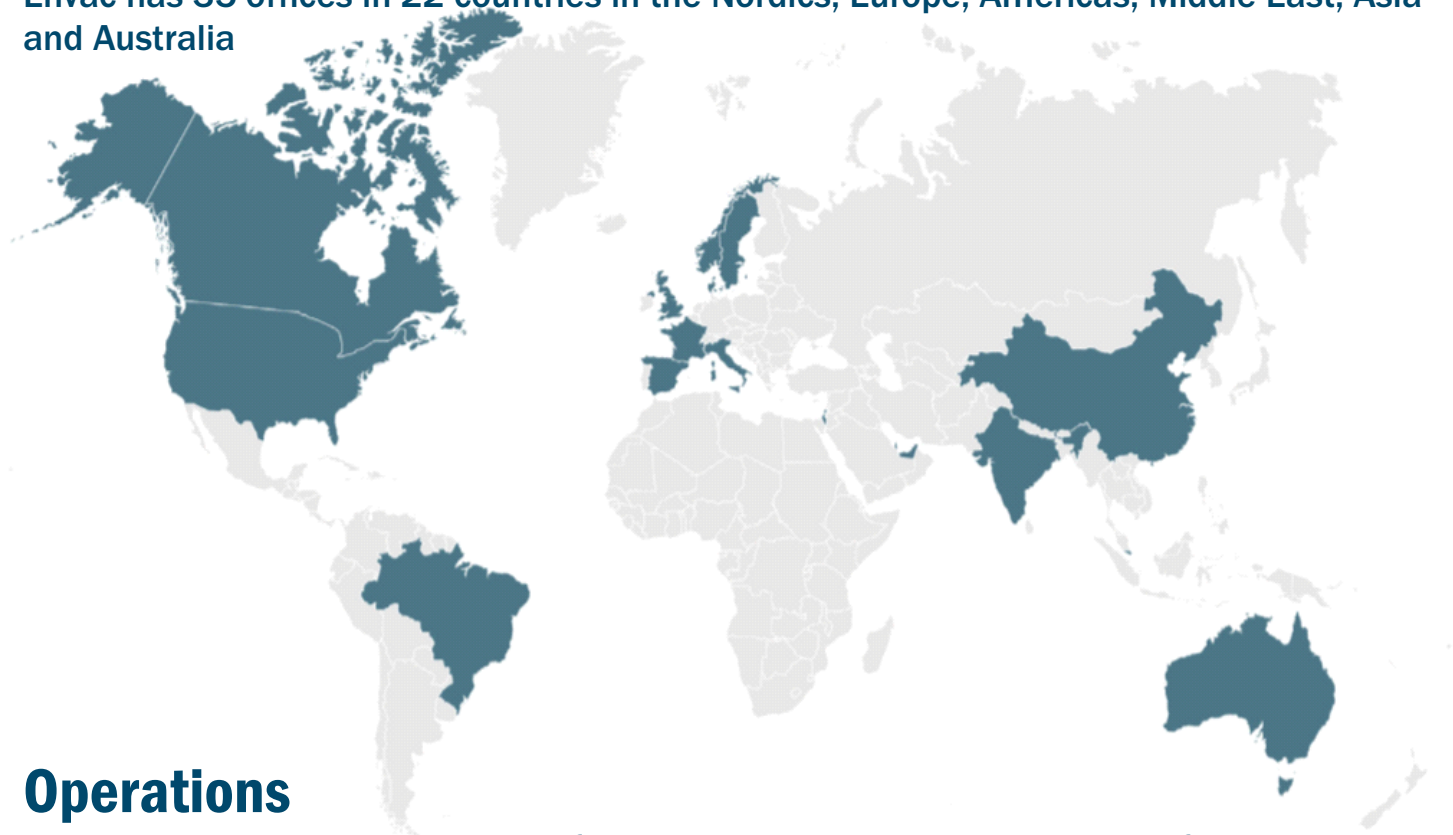
Envac is one of the most innovative players in the global waste collection industry and inventor of the pneumatic waste collection system. The first system (ever) was installed at Solleftea Hospital in 1961 and is still running.

Founded

1953 (as Aktiebolaget Starksugarna, Sweden)

Geographical markets

Envac has 35 offices in 22 countries in the Nordics, Europe, Americas, Middle East, Asia and Australia



Operations

Design, development and supply of pneumatic waste collection systems for sustainable cities, hospitals and airports. Operation and maintenance of Envac systems including system upgrades.

CEO

Joakim Karlsson (Stockholm, Sweden)

Owner

Stena Adactum AB, a company in the Stena Sphere (Gothenburg, Sweden).

Key figures Stena Sphere 2019 (MSEKs*)

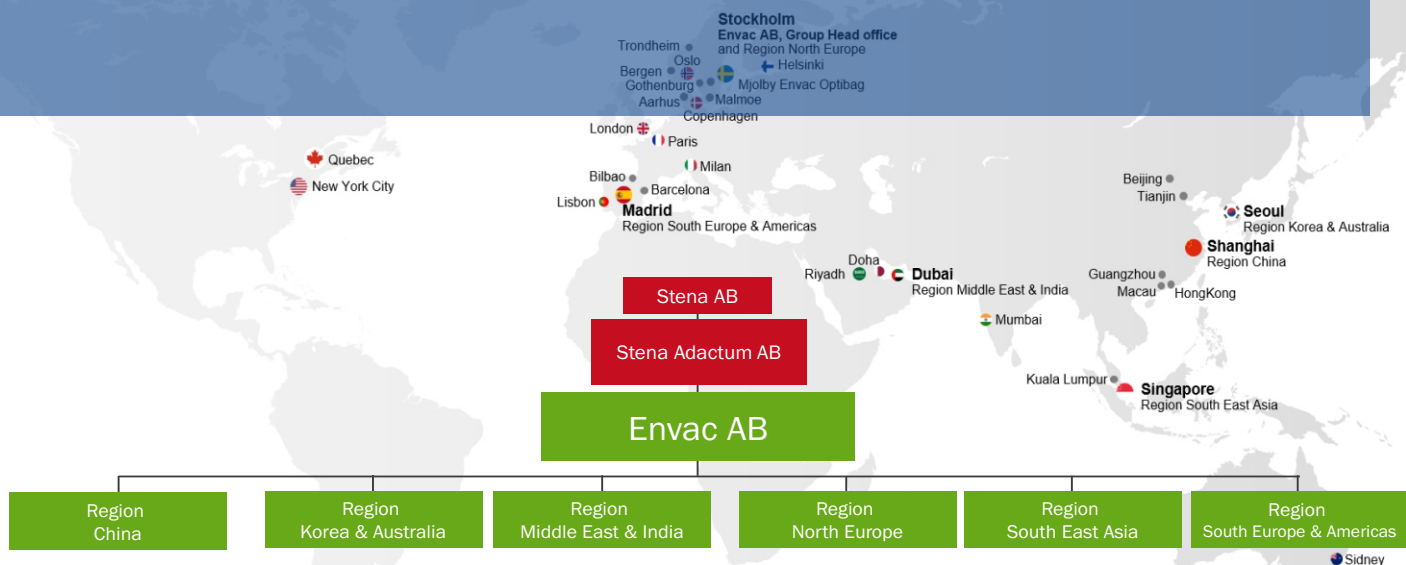
total revenues
63,366

Profit before tax
1,976

No. employees
19,200

**million Swedish crowns*

Our Figures in 2019



	2019
Order intake MSEK	1,583
Order backlog MSEK	3,066
Revenue MSEK	1,453
Number of employees, average	710

Our Vision

Underground waste collection systems become a utility and part of the smart cities infrastructure

Our Mission

Is to contribute to a better urban environment by offering innovative, rational and sustainable waste collection systems and services

Our Strategic Goals



The happiest users
in the waste
collection industry



The best
environmental
performance



The lowest
operational costs
for cities



Rel value for
building owners
and developers

The Envac system, behind the scenes, this is the technology and the infrastructure involved in making Envac operational 365 days a year is technical, the concept is simple.



Bins, but not as you know them

Replacing bins are Envac's waste inlets. Whilst they may look like bins they are, in fact, connected to an underground pipe network that is linked to a collection station (more on that later).

The power of airflow

Once the inlets are full – or at pre-programmed times as specified by the system's owner – powerful fans situated in the collection station are activated by Envac's control platform, which creates negative airflow that sucks the bagged waste from each inlet to large containers – one for each stream.

One pipe, multiple waste streams

Whilst there can be as many inlets collecting as many different waste streams as required, there is only one underground pipe network that transports the waste from inlet to the collection station. Once the collection cycle for one stream is complete, is time for the next waste stream begins.

Next stop the collection station

Upon arriving at the collection station, hundreds of waste bags enter a cyclone to remove the air used to transport the bags before being fed into a large container and once this is full, a standard collection vehicle take it away to be processed.

Inside or outside?

Envac's system can be installed anywhere – and the inlets don't have to be located externally and reserved for residential developments. Across the world, Envac can be found in apartment blocks and/or public parks and streets.

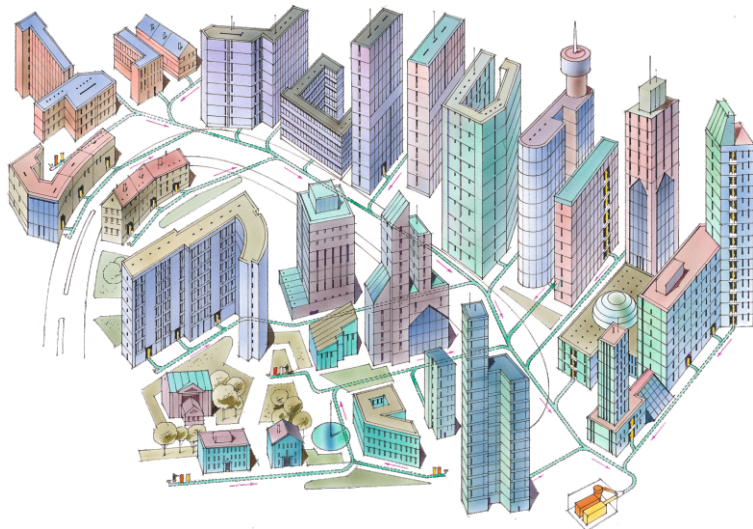
Self-emptying litter bins

are ideal for the public realm, such as parks and entertainment venues. The system eliminates the problems associated with overfull litter bins and driving into the crowds at all times to empty them. It also reduces the risk of pests and bad smells.

Envac's waste collection solutions are smart, sustainable and cost-efficient. We provide added value for property owners and ensure satisfied end-users, no matter if the system is used at home or at work.

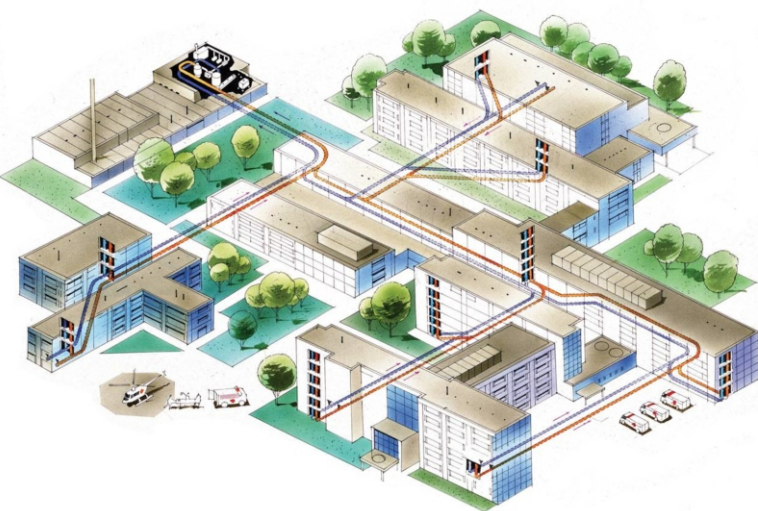
CITIES

quieter, safer and more pleasant. Envac in the city without open waste containers, overflowing waste bins on the streets or waste collection vehicles causing traffic jams and polluting the air. Cities become cleaner, greener and more appealing, making communities safer and significantly reducing carbon emissions.



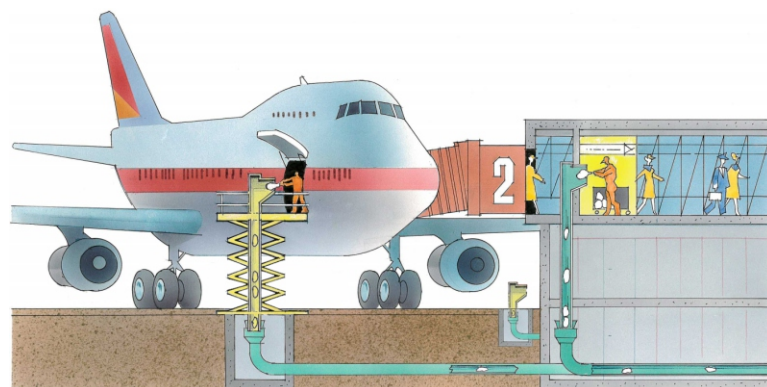
HOSPITALS

with an Envac system waste and soiled linen are transported in a closed pipe net hidden in the fabric of the building, not on carts in corridors and lifts. No waste related pathogen exposure and minimised risk of infections and cross contamination. A cleaner and safer environment for patients, staff and visitors. Hospital hygiene is improved.



AIRPORTS

waste collection that's off to a flying start. Whether your goal is to collect public litter within airport terminals, effectively manage waste from incoming flights or install a system to handle wet and dry waste from on-site flight catering facilities, Envac is leading the way when it comes to pneumatic waste collection systems in airport environments.



SERVICE OVER TIME

To maintain high performance in your Envac waste management system, Envac Services offers regular operations and maintenance programs. Well-planned packages system run without interruption, year in and year out.



**WASTE COLLECTION MANAGEMENT FOR A
SUSTAINABLE AND LOW CARBON MODEL OF CITIES**

**BARRIO GÓTICO, BARCELONA,
STOCKHOLM ROYAL SEAPORT,
EMIRATES FLIGHT CATERING, DUBAI,
REFLECTIONS ON KEPPELBAY SINGAPORE,
WEMBLEY CITY,
EXPO 98 LISSABON,
SEJONG CITY KOREA,
HAINAN CANCER HOSPITAL CHINA,
HEART OF DOHA,
TIANJIN ECOCITY CHINA,
BERGEN – ALL INNER CITY...**

Mandatory or preferred infrastructure in 44 cities in 2019

Bergen,
Trondheim,
Tromsø,
Asker,
Tønsberg,
Lørenskog,
Skedsmo/
Lillestøm,
Oslo,
Tampere,
Helsinki,
Espoo,
LB Brent,
LB Barking and
Dagenham,
Stockholm,

Linköping,
Järfälla,
Sundbyberg,
Lund,
Kungälv,
Tyresö,
Halmstad,
Singapore,
Doha,
Selong City/
Seoul,
Xixian,
Tianjin,
Alcobendas,
Aranjuez,
Barcelona,

Bilbao,
Burgos,
Galdacano,
Guadalajara,
Huelva,
Leon,
Llodio,
Madrid,
Majadahonda,
Pamplona,
Sestao,
Sevilla,
Torrent,
Vitoria,
Zaragoza.

**“Best
Environmental
Practice for the
Waste Management Sector”**



CONTRIBUTION TO THE 2030



SUSTAINABLE DEVELOPMENT GOALS

3 GOOD HEALTH AND WELL-BEING



ENVAC **AVOID 2.737 kg/CO₂** and **1,035 toe** (ton of oil equivalent) at year for every route of truck removed

ENVAC technology contributes to HUMAN WELL-BEING by reducing noise levels in an 80% and bad odors in a 99% and improving hygienic conditions

5 GENDER EQUALITY



ENVAC is working on the development of a GENDER EQUALITY PLAN as established in the Local Laws of each country

6 CLEAN WATER AND SANITATION



ENVAC ELIMINATE THE WATER CONSUMPTION AND CHEMICALS for cleaning containers

7 AFFORDABLE AND CLEAN ENERGY



ENVAC uses SUSTAINABLE AND LESS POLLUTING TECHNOLOGY reducing the consumption of fossil fuels. Some terminals have implemented PHOTOVOLTAIC ENERGY SOLUTIONS

9 INDUSTRY INNOVATION AND INFRASTRUCTURE



ENVAC SYSTEMS VERSATILITY allows to easily extend the collection of new fractions, new collection routes are not required

9 INDUSTRY INNOVATION AND INFRASTRUCTURE



ENVAC's operational infrastructures incorporate ARTIFICIAL INTELLIGENCE (AI) TO OPTIMIZE MANAGEMENT

11 SUSTAINABLE CITIES AND COMMUNITIES



ENVAC contribute to create SUSTAINABLE CITIES and communities, insofar they allow integrating the waste collection as one more basic infrastructure

ENVAC inlets RELEASES CONTAINERS on streets, more than the 50% of the surface

13 CLIMATE ACTION



ENVAC systems RESILIENCE AND ROBUSTNESS face adverse climatic events (tornadoes, hurricanes, waterspouts, etc.)

ENVAC contributes to reduce the effects of "URBAN HEAT ISLANDS"